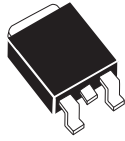


CSHD5-25L

**SURFACE MOUNT
LOW FORWARD VOLTAGE DROP
SILICON SCHOTTKY RECTIFIER
SINGLE, 5.0 AMPS, 25 VOLTS**

**LOW
V_F**



DPAK RECTIFIER CASE

CentralTM
Semiconductor Corp.

DESCRIPTION:

The CENTRAL SEMICONDUCTOR CSHD5-25L is a Silicon Schottky Rectifier designed for surface mount power applications requiring a low forward voltage drop.

MARKING CODE: FULL PART NUMBER

MAXIMUM RATINGS: (T_C=25°C unless otherwise noted)

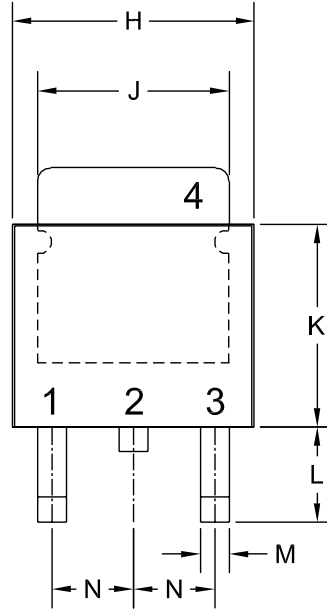
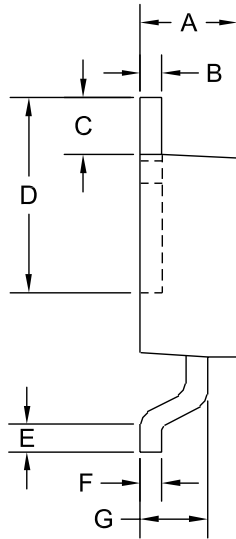
	SYMBOL		UNITS
Peak Repetitive Reverse Voltage	V _{RRM}	25	V
Average Rectified Forward Current (T _C =120°C)	I _O	5.0	A
Peak Forward Surge Current (tp=10ms)	I _{FSM}	80	A
Peak Repetitive Reverse Surge Current (tp=2µs)	I _{RSM}	1.0	A
Critical Rate of Rise of Reverse Voltage	dv/dt	10,000	V/µs
Operating and Storage			
Junction Temperature	T _J , T _{stg}	-65 to +150	°C
Thermal Resistance	θ _{JC}	2.5	°C/W

ELECTRICAL CHARACTERISTICS: (T_C=25°C unless otherwise noted)

SYMBOL	TEST CONDITIONS	MIN	MAX	UNIT
I _R	V _R =25V		500	µA
I _R	V _R =25V, T _C =125°C		200	mA
V _F	I _F =5.0A		0.47	V
V _F	I _F =5.0A, T _C =125°C		0.35	V

R3 (30-September 2005)

DPAK RECTIFIER CASE - MECHANICAL OUTLINE



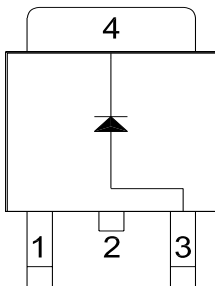
R2

LEAD CODE:

- 1) NO CONNECTION
- 2) CATHODE
- 3) ANODE
- 4) CATHODE

PIN 2 IS COMMON TO THE TAB (4).

MARKING CODE: FULL PART NUMBER



SYMBOL	DIMENSIONS		DIMENSIONS	
	MIN	MAX	MIN	MAX
A	0.083	0.108	2.10	2.75
B	0.016	0.024	0.40	0.60
C	0.063		1.60	
D	0.203	0.219	5.15	5.55
E	0.039		1.00	
F	0.020		0.50	
G	0.051	0.071	1.30	1.80
H	0.248	0.268	6.30	6.80
J	0.197	0.217	5.00	5.50
K	0.209	0.224	5.30	5.70
L	0.090	0.106	2.30	2.70
M	0.012	0.031	0.30	0.80
N	0.091		2.30	

DPAK RECTIFIER (REV: R2)